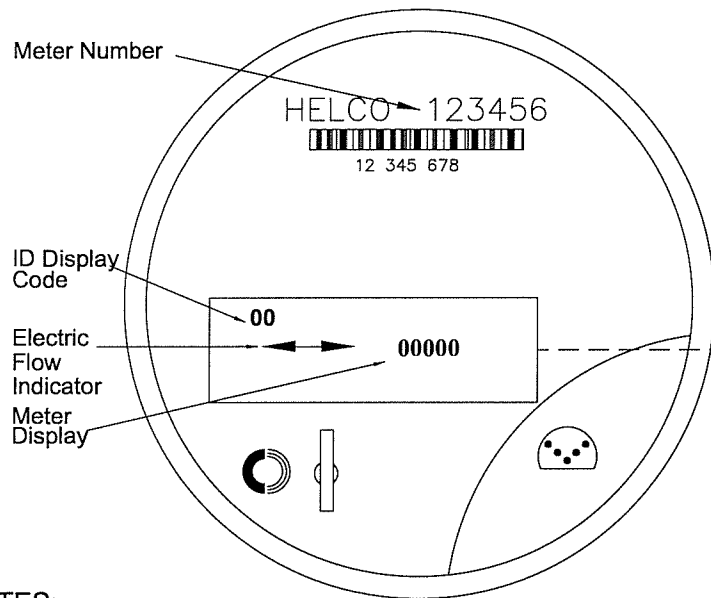


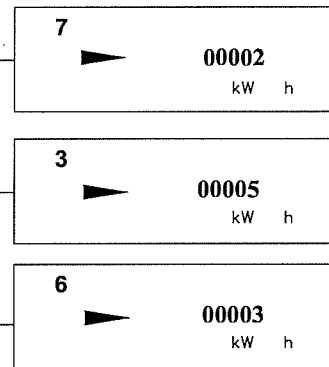
NET Energy Meter Display (Meters installed prior to January 1, 2011)

HELCO NET ENERGY METER



EXAMPLE

ID DISPLAY DESCRIPTION



ID Display Code "7"
Meter Displays Net Energy
Reads 00002 kWh

ID Display Code "3"
Meter Displays Energy HELCO Delivered to Customer
Reads 5 kWh

ID Display Code "6"
Meter Displays Energy HELCO Received from Customer
Reads 3 kWh

NOTES:

- The NEM meter is a solid state, multi-measurement, highly accurate electronic meter capable of measuring the flow of energy in both Forward (HELCO Deliver) and Reverse (HELCO Receive) directions:
 - ▶ When the indicator is pointing right, HELCO is delivering energy to the customer.
 - ◀ When the indicator is pointing left, HELCO is receiving energy from the customer.
- The NEM meter will scroll through several screens as shown in the example above. Refer to the ID Display Code to determine what information is being displayed. Commercial and time-of-use customers will have meters that display more ID Display codes than shown above. There may also be slight differences in the display depending on the manufacturer and model of the NEM meter.
- The NEM energy readings will increment based on the amount of power delivered by HELCO or received from the customer over a period of time similar to how a car's odometer will increment for the distance traveled.
- The NEM meter is typically installed with the Delivered, Received and Net Energy Meter energy registers at 00000. Some NEM meter may have the Net Energy registers set to 50000 initially.
- The NEM customer is billed off the Net Energy Readings (ID Display Code 7).

Example	ID Display Code	Current Reading	Previous Reading	Consumption
Net Energy	7	00002	minus 00000	= 00002

- Net Energy readings can be also be confirmed by reading the HELCO Delivered (ID Display Code 3) minus HELCO Received (ID Display Code 6).

Example	ID Display Code	Current Reading	Previous Reading	Consumption
Energy Delivered	3	00005	minus 00000	= 00005
- Energy Received	6	00003	minus 00000	= 00003
Net Energy				00002