

Public Presentation

Maalaea-Kamalii Transmission Line Project

December 13, 2011
Kamalii Elementary School

Welcome

- Why are we here tonight?
 - Review alternative options
 - Obtain community input

Meeting Agenda

- Welcome and Introductions
- Project Presentation by MECO
- Community Input, Questions, and Comments
- Next Steps
- Wrap-up and Aloha

POWERING SOUTH MAUI

Maalaea – Kamalii Transmission Line Project

What is the Purpose of this Project?

- Install a second 69kV transmission line between the Maalaea Power Plant and the new Kamalii Substation in South Kihei to support current demand and future load growth and voltage in South Maui.

Why Do We Need this Project?

- This project is necessary to ensure reliable electrical service, improvements to the integration and use of intermittent renewables, and to meet the current and future power demands of South Maui.
- This project will allow for more efficient, reliable, and safer operations in the grid.
- Greater customer satisfaction due to reduced outage times and improved reliability.

Why Do We Need this Project Now?

- Avoid interruptions in service
- Prevent overloading of existing facilities
- Maintain reliable electrical service
- Reduce power restoration times
- Support increased load from Kihei Police Station, Kihei High School, and other upcoming projects

Previous Community Meetings

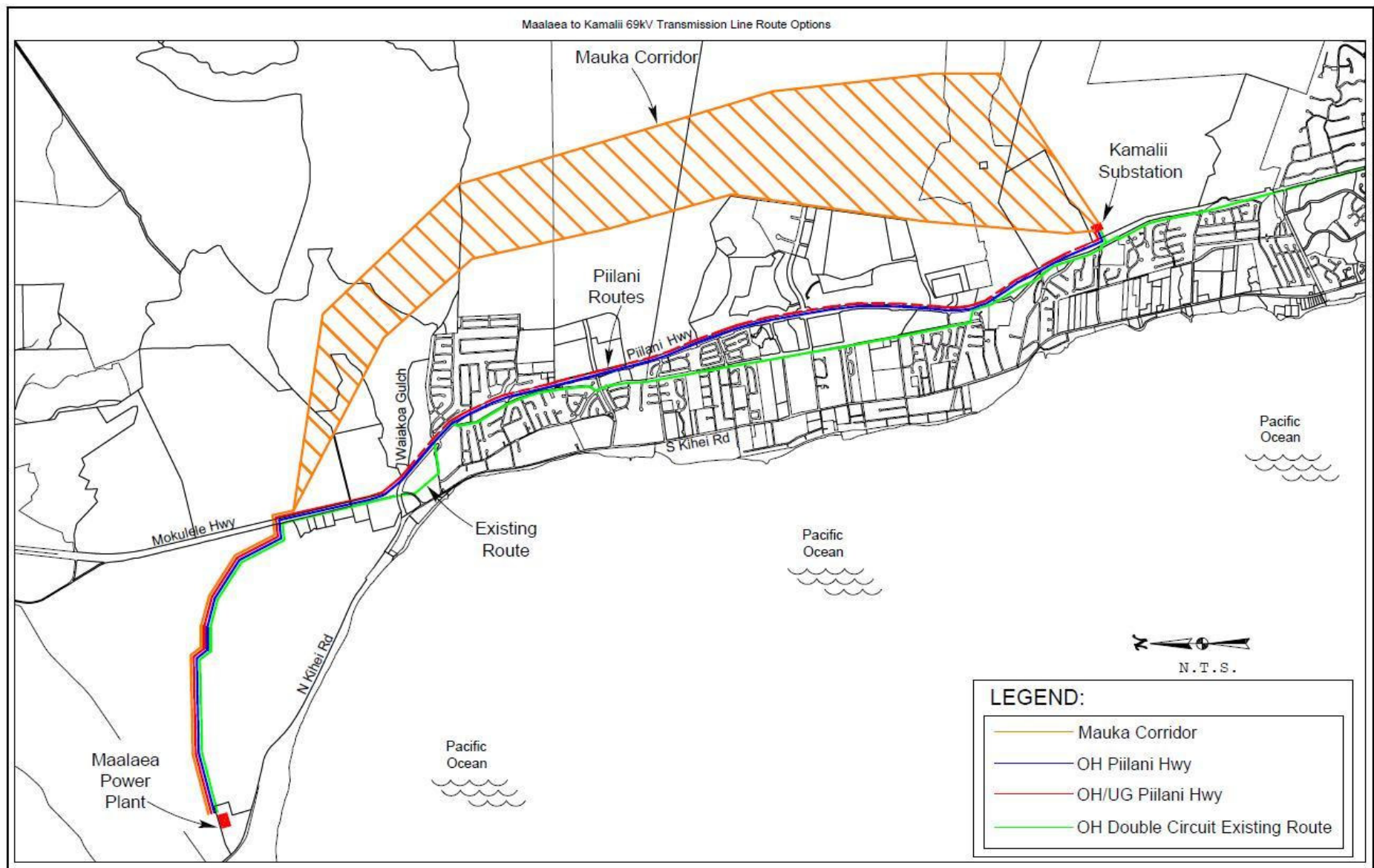
- Community of Kihei Public Meeting December 2009
 - Presented MECO's project overview and anticipated schedule
- Community of Kihei Public Meeting August 2010
 - Presented an update on the Route Study and preliminary route alternatives
- Kihei Community Association (KCA) Planning Committee June 2011
 - MECO provided update to KCA regarding route options and schedule
- Kihei Community Association August 2011
 - MECO presented the KCA with route preference based on Route Study, project schedule, and cost considerations

Route Option Considerations:

- Environment
- Archaeology and Cultural Resources
- Relationship to Land Uses and Plans
- Use of State and County Lands
- Use of Private Lands
- Accessibility
- Land Acquisition
- Topography and Soils
- Operational Parameters
- Social Impacts (visual/aesthetics)
- Financial Impacts
- Implementation Timing

Maalaea – Kamalii Transmission Line Project

Conceptual Kamalii 69kV Transmission Route Options



High Level Conceptual Route Options Cost Comparisons



- Includes high-level engineering cost estimates
- Estimates subject to change with detailed engineering

Conceptual Estimates of Rate Impacts for Route Options

Route Option	Monthly Increase	Annual Increase
Mauka Corridor	\$7 per month	\$84 per year
Piilani OH	\$3 per month	\$36 per year
Piilani OH/UG	\$10 per month	\$120 per year
Rebuild Existing	\$4 per month	\$48 per year

- Estimates based on average usage of 600 kWh per month
- Costs spread over 50 years
- Increases affect all of Maui County (Maui, Molokai, Lanai)
- Estimated increases not included in current rate case

Preliminary Project Timeline

Project Phase	Estimated Duration
Engineering	12 months
Regulatory Permits	24 months
PUC Approval	12 months
Materials	6 months
Construction	18 months

- Estimated project completion in 4th Quarter of 2017

Questions, Comments, Feedback

Next Steps...

- Project Schedule
- Detailed Engineering
- Future Community Meeting

Contact Information

- Ryan Powell, System Designer
Maui Electric Company, Ltd.
210 West Kamehameha Avenue
Kahului, Hawaii 96732
Phone: (808) 872-3213
Fax: (808) 872-3504
Email: ryan.powell@mauielectric.com
- Presentation will be available on the MECO website at www.mauielectric.com

Mahalo for your time and input

Aloha!